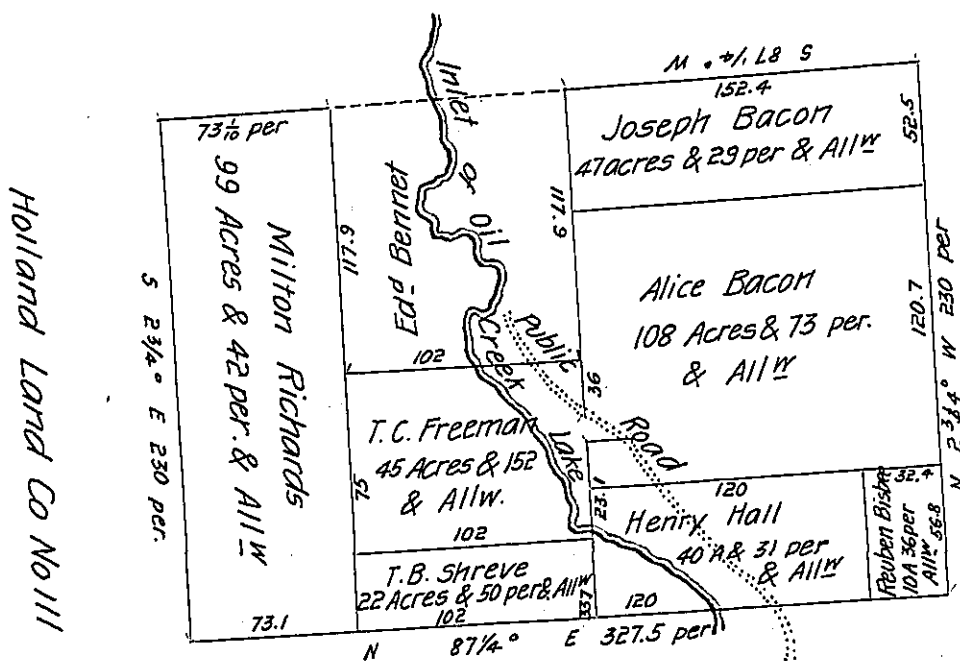


Courses & Dist.
 S 2 3/4° E 230
 N 87 1/4° E 327.5
 N 2 3/4° W 230.
 S 87 1/4° E 152.4
 S 2 3/4° E 117.9
 S 87 1/4° W 102
 N 2 3/4° W 107.9
 S 87 1/4° W 73.1

Charles B. Power



W-36

2-210-187

Israel Shreve of Carnahan

Draft of a tract of land situated in Bloomfield Township in the County of Crawford Containing Three hundred & seventy three acres & ninety three perches and allowance of six per cent for roads &c. Surveyed for Milton Richards, T. C. Freeman, T. B. Shreve, Henry Hall, Reuben Bisbee Alice Bacon & Joseph Bacon the 24th day of May A.D. 1870 being a part of a larger tract-Four hundred & forty eight acres & allowance originally surveyed in pursuance of a warrant granted to John Taylor dated the 18-day of December A.D. 1806

Thos Van Horne C. S.

IN TESTIMONY that the above is a copy of the original remaining on file in the Department of Internal Affairs of Pennsylvania, made conformably to an Act of Assembly approved the 16th day of February, 1833, I have hereunto set my Hand and caused the Seal of said Department to be affixed at Harrisburg, this twenty sixth day of September 1906

Charles B. Power
 Secretary of Internal Affairs.